

SOUTHWEST  
UTAH PUBLIC  
**HEALTH**  
DEPARTMENT



# Point of Dispensing (POD) Overview

Southwest Utah Public Health  
Emergency Preparedness &  
Communicable Disease Division

# **Southwest Utah Public Health Department**

**PREVENT • PROMOTE • PROTECT**

**Our Mission is to protect the community's health through the promotion of wellness and the prevention of disease.**

**Serving Beaver, Garfield, Iron, Kane, and Washington Counties.**

**SWUHEALTH.GOV**

# What is a POD?

**Points of Dispensing (PODs) are community locations at which public health agencies dispense or administer medical countermeasures (MCMs) to the public.**

**The goal of a POD is to reduce the number of people who become ill due to a biological threat.**

Three types of events that could require activation of a POD:

- Pandemic or Epidemic
- Natural Disaster
- Biological Attack

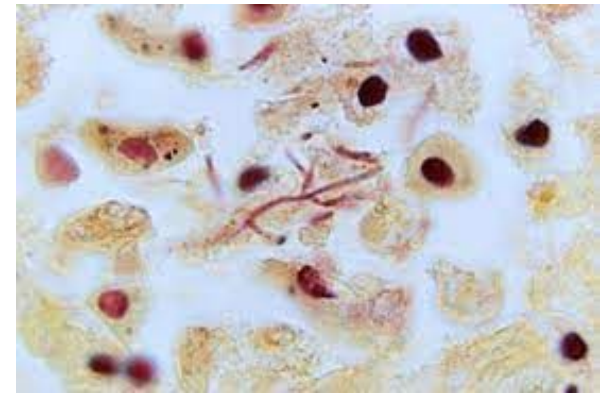
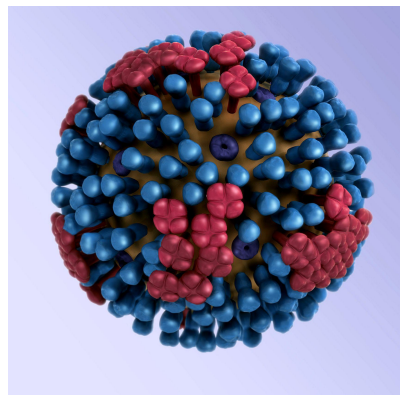


A **biological threat** is identified and a **public health emergency** declaration is made...

**Anthrax**

**Pandemic Influenza**

**Pneumonic Plague**



**Botulism**

**Novel Disease**

**Smallpox**

In order to respond effectively to a disease outbreak, it needs to be identified (through epidemiology, surveillance, & Public Health Lab) and treatments prescribed or developed.

# What a POD is NOT

- Medical Treatment Site
- Testing Site
- Alternate Care Site
- Shelter



PODs do not replace treatment from your Primary Care Provider, such as your regular medications or if you are already sick.

# Local Government Response

A local jurisdiction will attempt to manage a public health emergency by first utilizing local resources.

If local resources are or are believed to become insufficient to manage the public health emergency, then a request is made for the deployment of state assets.



# State Government Response

State government will respond by providing additional resources to assist in the management of the public health emergency.

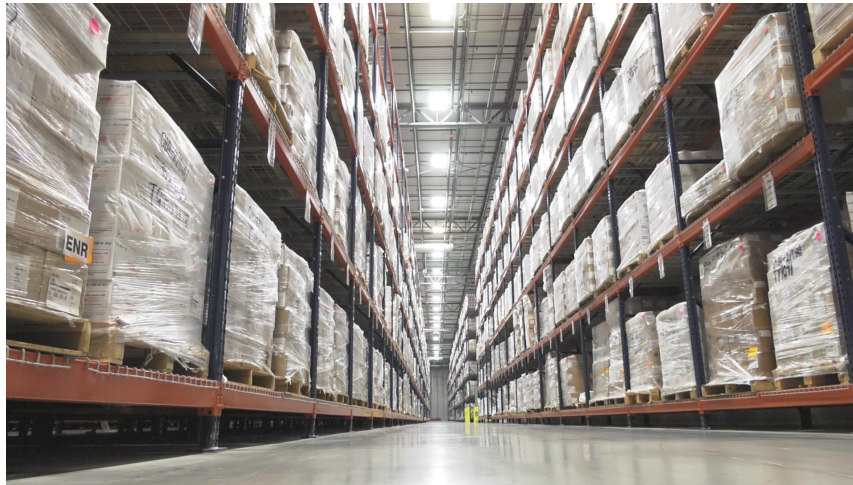
If state assets are or believed to become insufficient, then a request is made for deployment of federal assets.





# ***Strategic National Stockpile***

The Strategic National Stockpile (SNS) includes federal deployable assets to manage a public health emergency, and is managed by the Administration for Strategic Preparedness & Response (ASPR).



# Strategic National Stockpile may contain:

- **Antibiotics**
- **Antivirals**
- **Vaccines**
- **Immunoglobulins**
- **Chemical antidotes**
- **Antitoxins**
- **Life-support medications**
- **IV administration**
- **Airway maintenance supplies**
- **Medical/surgical items**
- **Personal Protective Equipment (PPE)**

Closed PODs



# Strategic National Stockpile

There are SNS warehouses located throughout the United States\*:



*\*map represents ASPR regional offices, not actual warehouse locations.*

# ***Strategic National Stockpile***



SNS supplies can reach any location in the US within **12 hours** of order to deploy.

# ***Strategic National Stockpile***



The SNS is shipped to a Receiving, Staging, and Storage (RSS) facility.

# ***Strategic National Stockpile***



The shipment is then broken down at the RSS for distribution to the individual PODs.

# How will you know?

- Press Release by SWUPHD Public Information Officer
- Emergency Alerts
  - Sign up at [swuhealth.gov/prepare](https://swuhealth.gov/prepare)
- Hours of operation & location of PODs
- Guidance on disease prevention
- Any special instructions (appointments, priority groups, etc.)

# Head of Household Policy

- Medication may be picked up by one person for all family members in a household.
- Ensure to bring the following information for each person in the home:
  - Name of individuals in household
  - Address
  - Birthday and age
  - Weight (if under 18)
  - Any allergies



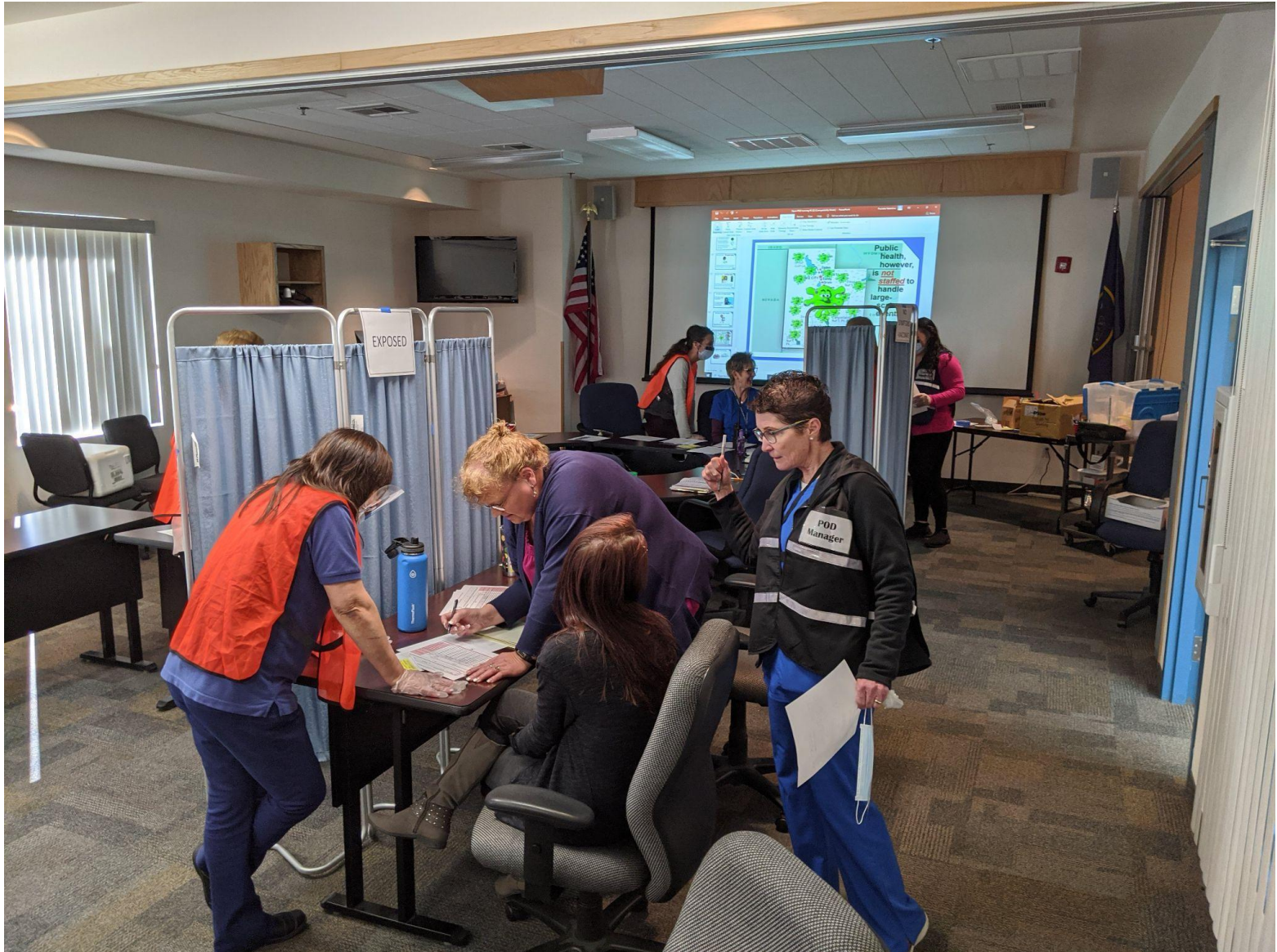
# POD Flow

- Greet / Triage
- Education – provide necessary information
- Registration/Screening process – complete paperwork and review
- Medication is dispensed
- Exit

# Sample POD Layout



# POD training



# POD Example



# POD (Drive Thru) Exercise in St. George



# POD Exercise



# COVID-19 Vaccination POD



# Closed POD exercise: Faith Based Organization





# CLOSED POD

**Closed PODs are sites staffed and managed by organizations and agencies (both public and private) to dispense MCMs to their: employees, clients, patients, students, congregation members, or other community groups.**

- Faith-based organizations
- Businesses
- Schools
- Government agencies, etc

# **To Become a Closed POD Partner:**

- Contact SWUPHD Emergency Preparedness Division.
- Sign Memorandum of Understanding (MOU).
- Provide emergency points of contact (POC).
- Develop a CLOSED POD Plan and Identify key positions (ICS).
- Participate in trainings with SWUPHD.

For more information  
visit  
[swuhealth.gov/prepare](http://swuhealth.gov/prepare)  
or call  
435-986-2556

